

ECO-i™ Submittal Data



Building Life.

09AHX52 Indoor Unit: 1 Way Air Discharge

Job Name: _____
 Location: _____
 Engineer: _____
 Submitted to: _____
 Submitted by: _____
 Reference: _____

Approval: _____
 Date: _____
 Construction: _____
 Unit #: _____
 Drawing #: _____



Parts Warranty: 1 Year
Built in Drain Pump
Washable Filter
Wired, Wireless or Simple Remote Option
Remote Sensor Option

Capacities

Cooling: Btu/h 9,600
 Heating: Btu/h 11,000
 Sensible Heat Ratio 0.72

Cooling Mode Nominal Conditions

Indoor: °F DB/°F WB 80/67
 Outdoor: °F DB 95
 Pipe Length (feet): 25
 Level Difference (feet): 0

Heating Mode Nominal Conditions

Indoor: °F DB 70
 Outdoor: °F DB/ °F WB 47/43
 Pipe Length (feet): 25
 Level Difference (feet): 0

Refrigerant and Piping

Refrigerant Type: 410A
 Metering Device (Electronic Expansion Valve): EEV
 Liquid Piping (inches): 1/4
 Gas Piping (inches): 1/2

Condensate

Drain Piping (OD) Inches: 1.25

Fan

Quantity/Type: Centrifugal
 Fan Motor Output (W): 60
 Drive: Direct
 Airflow Rate (L/M/H): 212 / 247 / 282

Power Supply

V/PH/Hz. 208 / 230 / 1 / 60
 Minimum circuit Amps (MCA): Amps 15
 Max. Overcurrent Protection (MOCP): 15
 Nominal Power Input-Cooling (W): 48/50
 Nominal Power Input-Heat (W): 44/46
 Running Amps: 0.26/0.29

Weight (lbs):

43

Sound Data

Sound Level (H/M/L) 5' below unit: 33 / 31 / 29

Coil

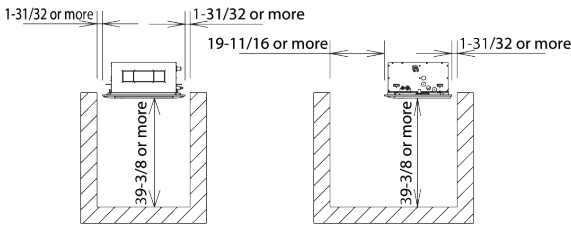
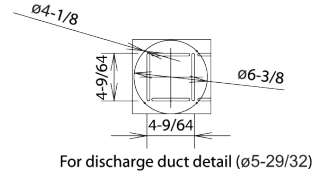
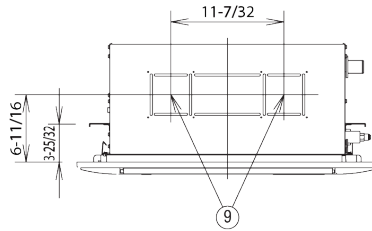
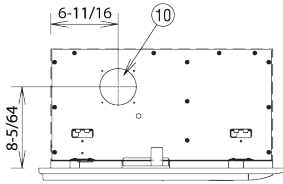
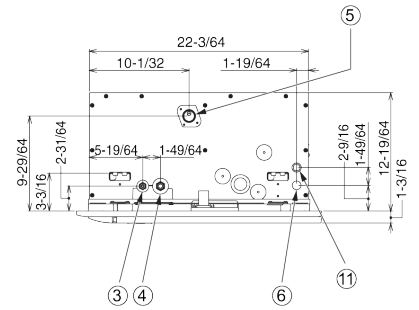
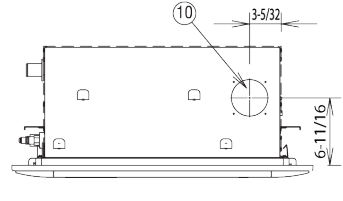
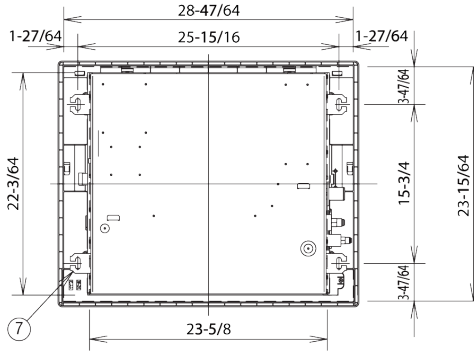
Coil Face Area (sq. ft.): 1.14
 Number of Rows: 3

➔➔➔ Dimensions

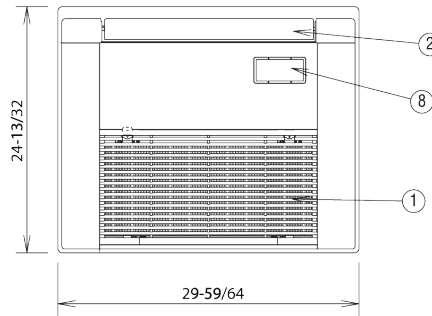
Indoor unit: 7, 9, 12 Type

| | |
|---|--|
| ① | Air intake grille |
| ② | Air outlet |
| ③ | Refrigerant liquid line $\phi 1/4"$ ($\phi 6.35$) (flare) |
| ④ | Refrigerant gas line $\phi 1/2"$ ($\phi 12.7$) (flare) |
| ⑤ | Drain connection VP25 (OD $\phi 1-1/4"$) |
| ⑥ | Power supply outlet |
| ⑦ | Suspension holes ($\phi 4-15/32" \times 1-3/16"$) |
| ⑧ | Wireless remote controller the reception department instation department |
| ⑨ | For discharge duct ($\phi 5-29/32"$) |
| ⑩ | For fresh air intake ($\phi 3-15/16"$) |
| ⑪ | Inter-unit control wiring |

«Filter dimension»
($20-55/64" \times 9-31/64" \times 15/32"$) * One



Required installation space



SANYO

Sanyo Commercial Solutions
A Division of SANYO North America
1300 Michael Drive
Wood Dale, IL 60191 USA
www.sanyohvac.com